

# ONLINE FAMILY ASL CLASS

ZOOM WITH MIKI & SHAYNE



***MARK YOUR CALENDAR - 1st Thursday of the month  
2025-26***

***Oct 2nd***

***Nov 6th***

***Dec 4th***

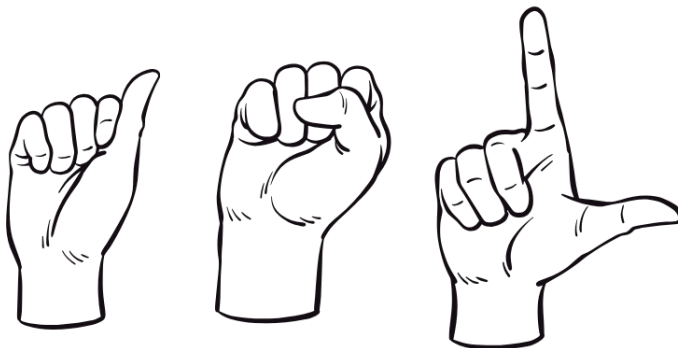
***Jan 8th***

***Feb 5th***

***March 5th***

***APRIL 2nd***

***MAY 7th***



## **TIPS:**

**Enable captions**

**One person talks/signs  
at a time**

**Mute unless talking**

**Keep your camera on**

**Use the chat feature or  
raise your hand if you  
have a question**

**WHEN: 6-7PM**

**WHAT: Bring topics  
and vocabulary you  
are interested in.**

**WHY: TO LEARN TO  
SIGN WITH YOUR  
CHILD.**

**For those that have any questions,  
please reach out to [mismith@pps.net](mailto:mismith@pps.net)**



**COLUMBIA REGIONAL  
INCLUSIVE SERVICES**

Columbia Regional Inclusive Services (CRIS) states their policy is no discrimination based on age, color, creed, disability, marital status, national origin, race, religion, sex, or sexual orientation, aligning with Portland Public Schools' (PPS) equity statement.